

INSTALLATION

1. The multiport valve is a side mounted valve to be installed on a vessel with top and bottom openings.
2. The multiport valve must be supported to the vessel at a height of around 1 meter for convenient operation of the valve (using the boss with M6 insert).
3. Ensure that the inlet and outlet piping are well supported and not transferring stress on to the MPV .
4. Make the Inlet , Outlet and Drain Connection.
5. Connect the Brine Suction Valve line to the Ejector using a 3/4" valve.

OPERATION

1. Always press the handle down before turning the handle to the desired position, viz. Service, Regeneration or Rinse.
2. If the line pressure is more, it is advisable to close the inlet valve before turning handle.
3. Ensure that minimum 2kg/ cm² pressure is available for getting optimum ejector performance.
4. If there is a suction problem even at 2kg/ cm² then the ejector may be clogged with dirt etc. For cleaning this, remove the ejector by unscrewing it from the MPV, clean and put back.

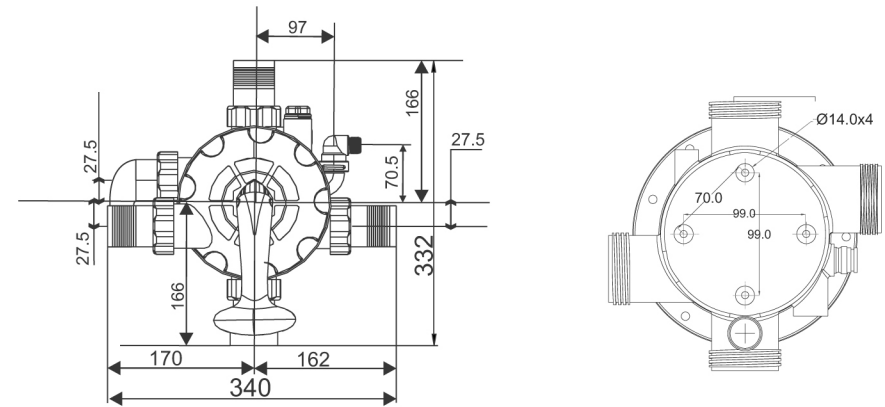
MULTIPOINT VALVE S1240FF

SPECIFICATIONS:

- | | | |
|---|---|---|
| 1. Inlet/Outlet/Vessel Top/Bottom connections | : | 1.5" BSPF |
| 2. Valve Mounting | : | Side Mount (Front Facing) |
| 3. Flow Rate | : | 12m ³ /hr @0.35kg/ cm ² |
| 4. Max. Operating Pressure | : | 5kg/ cm ² |
| 5. Ejection Suction at 2kg/ cm ² | : | 750Lph |
| 6. Ejection ratio | : | 1:1 |

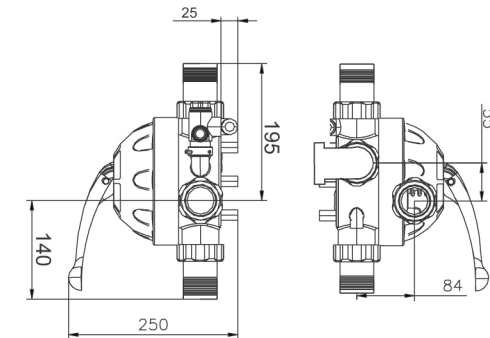
SCOPE OF SUPPLY :

1. Multiport valve .
2. O & M Manual



FRONT VIEW

BOTTOM VIEW



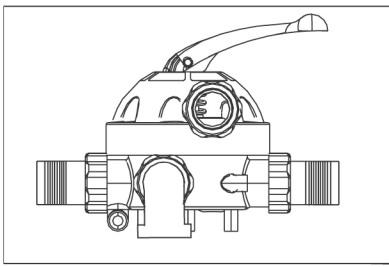
SIDE VIEW

GENERAL ASSEMBLY

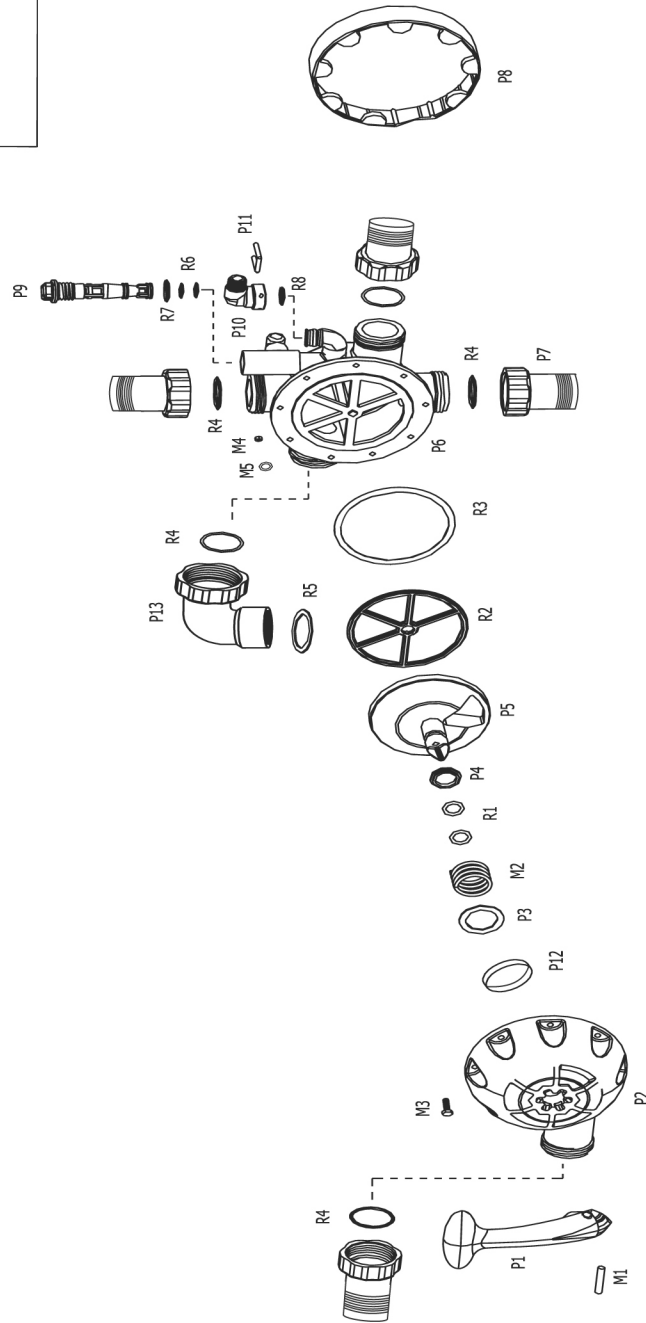
FILTRA CONSULTANTS AND ENGINEERS LTD.

Gala No. 2 & 3, Ground Floor, Neminath Industrial Estate No. 2, Navghar, Vasai (East), Dist.: Palghar - 401 219
Tel.: +91 8691009127/26 Email: filtraw@gmail.com Website: www.ewater-treatmentindia.com





EXPLODED VIEW



PARTS LIST

S.No.	DESCRIPTION	PART No
1.	Handle	P1
2.	Upper Housing	P2
3.	Spring washer	P3
4.	Disc Washer	P4
5.	Disc	P5
6.	Lower Housing	P6
7.	Union Assembly	P7
8.	Band	P8
9.	Ejector	P9
10.	Suction Elbow	P10
11.	U Pin	P11
12.	Upper Housing bush	P12
13.	Drain Elbow Assembly	P13
14.	Handle Pin	M1
15.	Spring	M2
16.	Bolt (M6X28)	M3
17.	Nut (M6)	M4
18.	Split Washer (M6)	M5
19.	Disc "O" ring (Ø18.7X3.6)	R1
20.	Star washer	R2
21.	Lower Housing Flange "O" Ring(13.9x4.70)	R3
22.	Union O ring (Ø44X3)	R4
23.	Drain Elbow Washer(Ø38xØ45x2.5)	R5
24.	Ejector "O" Ring (Ø16x2.62)	R6
25.	Ejector Knob Oval Ring(Ø21x28x2.5)	R7
26.	Suction Nozzle "O" Ring (Ø13.2x2.2)	R8

