

INSTALLATION:

1. Take a 20NB Rigid PVC riser pipe, approximately the height of the vessel and solvent cement the bottom distributor to one end of the pipe.
2. Insert this riser pipe into the vessel and cut the pipe from the top ensuring that the height of the pipe (with the distributor touching the bottom) is the same as the top of the vessel.
3. Pour RESIN into the vessel. Cover the mouth of the riser pipe while doing this so that Resin doesn't enter the pipe. Align the riser pipe so that it is in the centre of the vessel opening.
4. Screw on the top distributor to the bottom of the MPV.
5. Screw on the MPV to the vessel ensuring that the riser pipe goes through the top distributor into the MPV.

NOTE : You can also fill the resin in the vessel first and also fill same water in it. Then follow the procedure of cementing bottom distributor, cutting correct length of Riser pipe, fixing Top distributor to MPV and then pushing the riser pipe through the top distributor into the MPV. Now this MPV with attached riser pipe can be pushed into the vessel and screwed on the top.

6. Connect the Suction filter assembly to the ejector suction nozzle by fitting the suction tubing through the ferrule connector.
7. Put the suction filter into the Brine Tank ensuring that the Suction filter always remain vertical. You can cut the supplied tubing to the correct length so that the tubing always remain taut and does not loop. Alternatively the suction filter can be inserted in a 3" PVC pipe (with slot at the bottom) which is clamped to the Brine tank.
8. Make the inlet, outlet and drain connection.

OPERATION:

1. Always press the handle down before turning the handle to the desired position viz. Service, Regeneration or Rinse.
2. If the line pressure is more, it is advisable to close the Inlet valve before turning handle.
3. Ensure that minimum 2kg/ cm² pressure is available for getting optimum ejector performance.
4. If there is a suction problem even at 2kg/ cm² then the ejector filter screen may be clogged with dirt etc. For cleaning this, the bolts connecting the upper and lower housing of the MPV have to be removed, after disconnecting / closing the inlet. Then remove the filter and wash and clean it and refit reassemble the MPV.

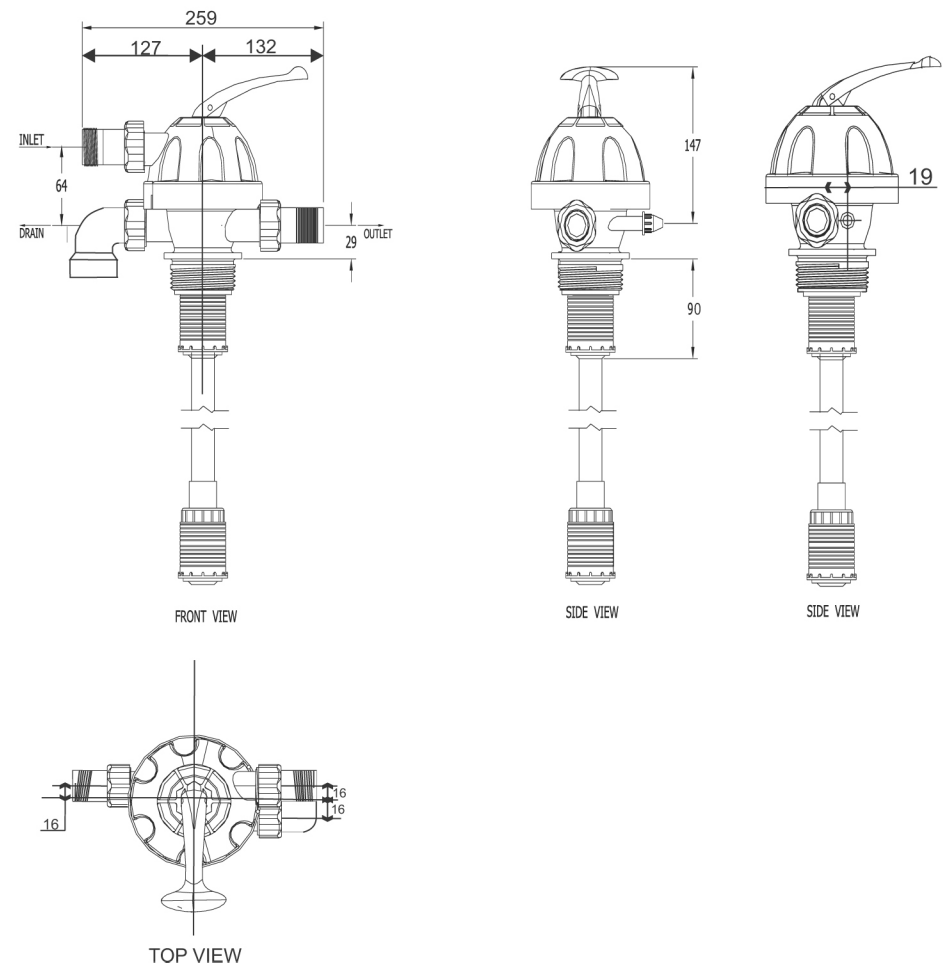
MULTIPORT VALVE S0225TF

SPECIFICATIONS:

- | | |
|--|--|
| 1. Inlet/Outlet/Drain connection | : 1" BSPF |
| 2. Valve threading for Vessel Mounting | : 2.5" NPSM |
| 3. Flow Rate | : 2m ³ /hr @0.35 kg/cm ² |
| 4. Max. Operating Pressure | : 5kg/ cm ² |
| 5. Ejector Suction at 2 kg/cm ² | : 170 lt/hr |
| 6. Ejector Ratio | : 1:2 |

SCOPE OF SUPPLY

1. Multiport Valve
2. Top and Bottom Distributor
3. O & M manual
4. Suction tubing with NRV and suction filter

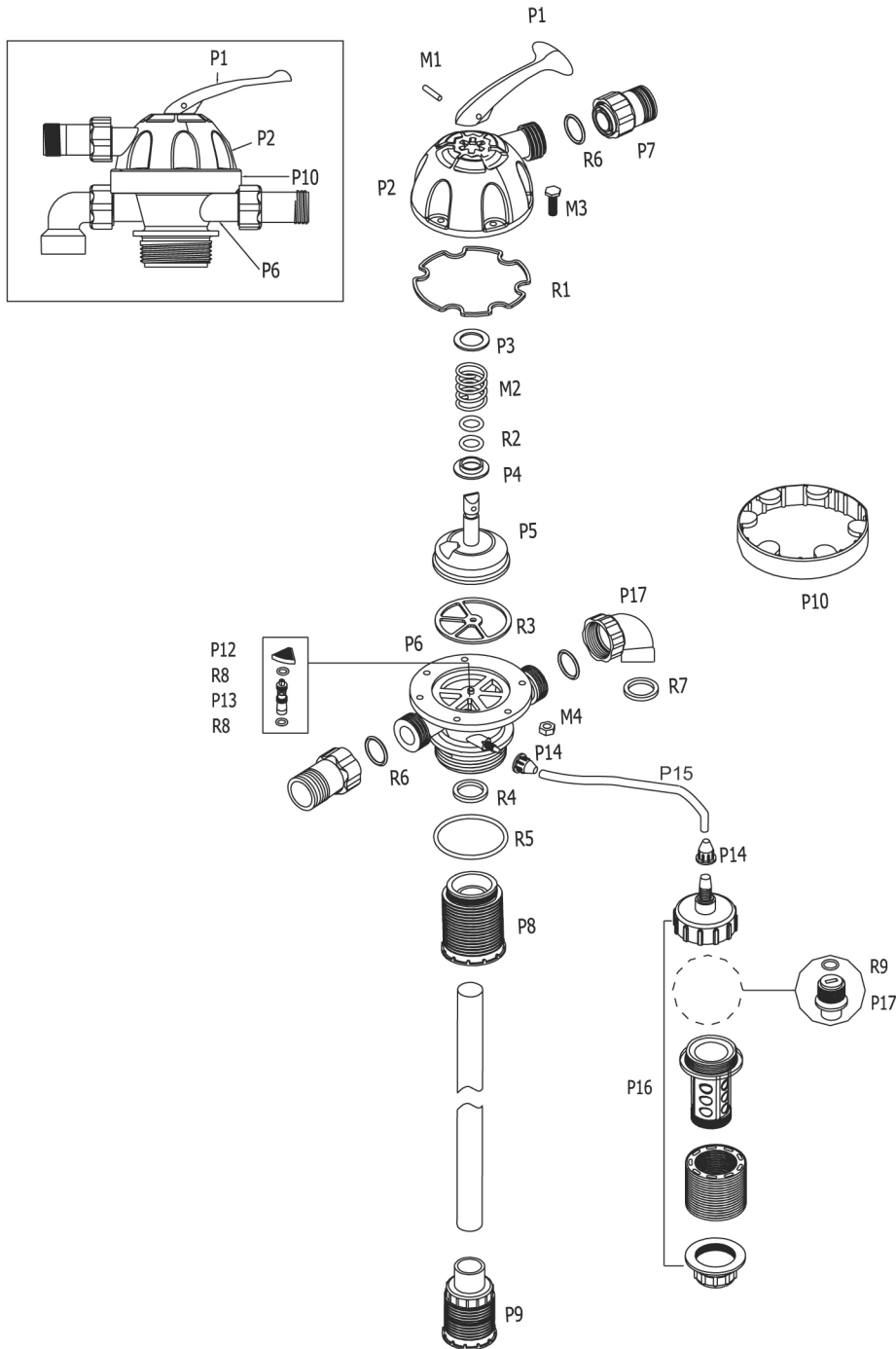


FILTRA CONSULTANTS AND ENGINEERS LTD.

Gala No. 2 & 3, Ground Floor, Neminath Industrial Estate No. 2, Navghar, Vasai (East), Dist.: Palghar - 401 219
Tel.: +91 8691009127/26 Email: filtraw@gmail.com Website: www.ewater-treatmentindia.com



EXPLODED VIEW



PART-LIST

| SR.NO | DESCRIPTION | PART NO. |
|-------|-------------------------------------|----------|
| 1. | HANDLE | P1 |
| 2. | UPPER HOUSING | P2 |
| 3. | SPRING WASHER | P3 |
| 4. | DISC WASHER | P4 |
| 5. | DISC | P5 |
| 6. | LOWER HOUSING | P6 |
| 7. | UNION ASSEMBLY | P7 |
| 8. | TOP DISTRIBUTOR | P8 |
| 9. | BOTTOM DISTRIBUTOR | P9 |
| 10. | BAND | P10 |
| 11. | EJECTOR STRAINER | P12 |
| 12. | EJECTOR | P13 |
| 13. | TUBING CONNECTOR | P14 |
| 14. | PVC TUBING | P15 |
| 15. | SUCTION FITLER WITH ADPTOR | P16 |
| 16. | NRV ASSLY | P17 |
| 17. | HANDLE PIN (5MM) | M1 |
| 18. | SPRING | M2 |
| 19. | BOLT M6X25 | M3 |
| 20. | NUT M6 | M4 |
| 21. | UPPPER HOUSING WASHER | R1 |
| 22. | DISC 'O' RING (9.5X2.62) | R2 |
| 23. | STAR WASHER | R3 |
| 24. | RISER PIPE ADPT "O" RING (24.5X2.8) | R4 |
| 25. | LOWER HOUSING 'O' RING (65X4) | R5 |
| 26. | UNION ASSLY 'O' RING(26.5X3) | R6 |
| 27. | DRAIN ASSEMBLY WASHER (24X31X2.6) | R7 |
| 28. | EJECTOR 'O' RING (8X2) | R8 |
| 29. | NRV 'O' RING (11.5 X 2.62) | R9 |

FILTRA CONSULTANTS AND ENGINEERS LTD.

Gala No. 2 & 3, Ground Floor, Neminath Industrial Estate No. 2, Navghar, Vasai (East), Dist.: Palghar - 401 219
 Tel.: +91 8691009127/26 Email: filtraw@gmail.com Website: www.ewater-treatmentindia.com

