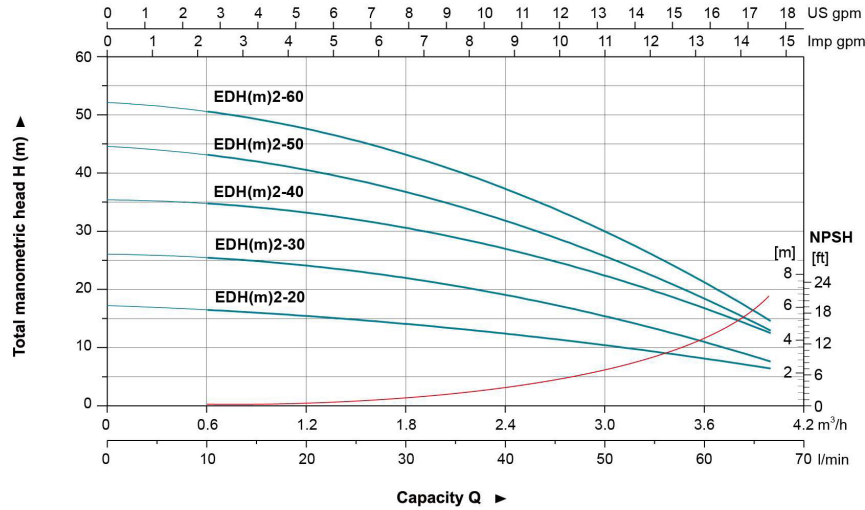
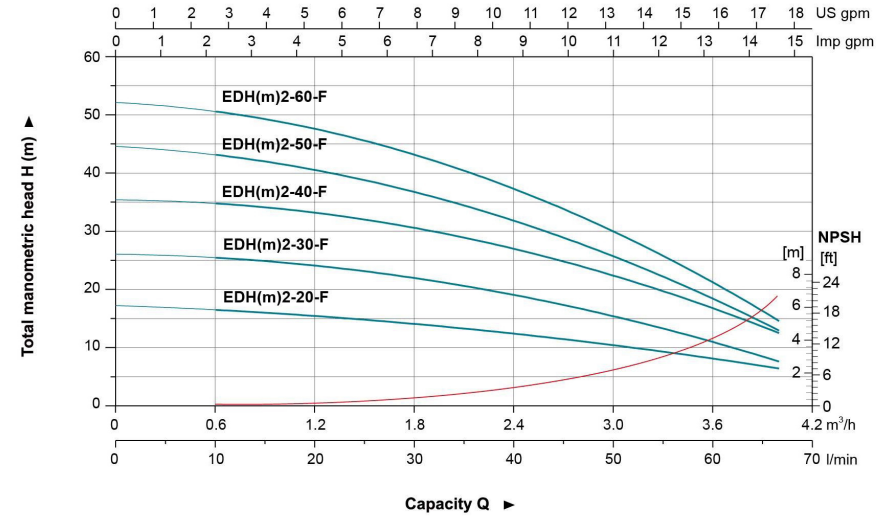


**Hydraulic Performance Curves**



**Hydraulic Performance Curves**



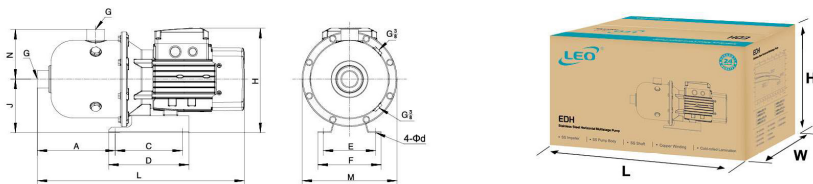
**Technical Data**

Model	Power		Q(m <sup>3</sup> /h) Q(l/min)	0.5	1	1.5	2	2.5	3	3.5	4
	kW	HP		8.3	16.7	25	33.3	41.7	50	58.3	66.7
EDH(m)2-20	0.37	0.5	H (m)	16.7	16.2	15	14	11	10.6	8.8	6.5
EDH(m)2-30	0.37	0.5		25.8	24.3	23.8	21.3	17	16.1	12.5	7.2
EDH(m)2-40	0.55	0.75		34.8	34.1	33.2	30.7	23	22.9	18.4	12.6
EDH(m)2-50	0.55	0.75		43.5	42.1	39.5	35.9	29	25.7	19.6	13.5
EDH(m)2-60	0.75	1.0		50.8	49.2	45.6	41.5	35	30.4	23.4	14.3

**Technical Data**

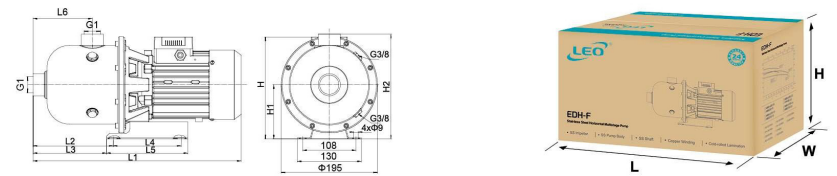
Model	Power		Q(m <sup>3</sup> /h) Q(l/min)	0.5	1	1.5	2	2.5	3	3.5	4
	kW	HP		8.3	16.7	25	33.3	41.7	50	58.3	66.7
EDH(m)2-20-F	0.37	0.5	H (m)	16.7	16.2	15	14	12	10.6	8.8	6.5
EDH(m)2-30-F	0.37	0.5		25.7	24.3	23.8	21.3	19	16.1	12.5	7.2
EDH(m)2-40-F	0.55	0.75		34.9	34.1	33.2	30.7	23	22.9	18.4	12.6
EDH(m)2-50-F	0.55	0.75		43.5	42.1	39.5	35.9	29	25.7	19.6	13.5
EDH(m)2-60-F	0.75	1.0		50.8	49.2	45.6	41.5	35	30.4	23.4	14.3

**Dimension**



Model	L	A	C	D	E	F	G	H	J	M	N	d	GW (Kgs)	L x W x H (mm)	Quantity (PCS/20 TEU)
EDH(m)2-20	427	160	138	165	108	130	G1	216	110	Φ195	103	9	10.7	465x225x270	1044
EDH(m)2-30	427	160	138	165	108	130	G1	216	110	Φ195	103	9	11.1	465x225x270	1044
EDH(m)2-40	427	160	138	165	108	130	G1	216	110	Φ195	103	9	12.4	465x225x270	1044
EDH(m)2-50	427	160	138	165	108	130	G1	216	110	Φ195	103	9	12.8	465x225x270	1044
EDH(m)2-60	427	160	138	165	108	130	G1	216	110	Φ195	103	9	13.8	465x225x270	1044

**Dimension**



Model	L1	L2	L3	L4	L5	L6	H		H1	H2	GW (Kgs)	L x W x H (mm)	Quantity (PCS/20 TEU)
							1~	3~					
EDH(m)2-20-F	426	162	148.5	138	165	120	197.5	187	110	213	10.7	460x225x275	1044
EDH(m)2-30-F	426	162	148.5	138	165	120	197.5	187	110	213	11.1	460x225x275	1044
EDH(m)2-40-F	426	162	148.5	138	165	120	197.5	187	110	213	12.4	460x225x275	1044
EDH(m)2-50-F	426	162	148.5	138	165	120	197.5	187	110	213	12.8	460x225x275	1044
EDH(m)2-60-F	426	162	148.5	138	165	120	197.5	187	110	213	13.8	460x225x275	1044

Available with:

**FILTRA CONSULTANTS AND ENGINEERS LTD.**

Gala No. 2 & 3, Ground Floor, Neminath Industrial Estate No. 2, Navghar, Vasai (East), Dist.: Palghar - 401 219  
Tel.: +91 8691009127/26 Email: [filtraw@gmail.com](mailto:filtraw@gmail.com) Website: [www.ewater-treatmentindia.com](http://www.ewater-treatmentindia.com)

