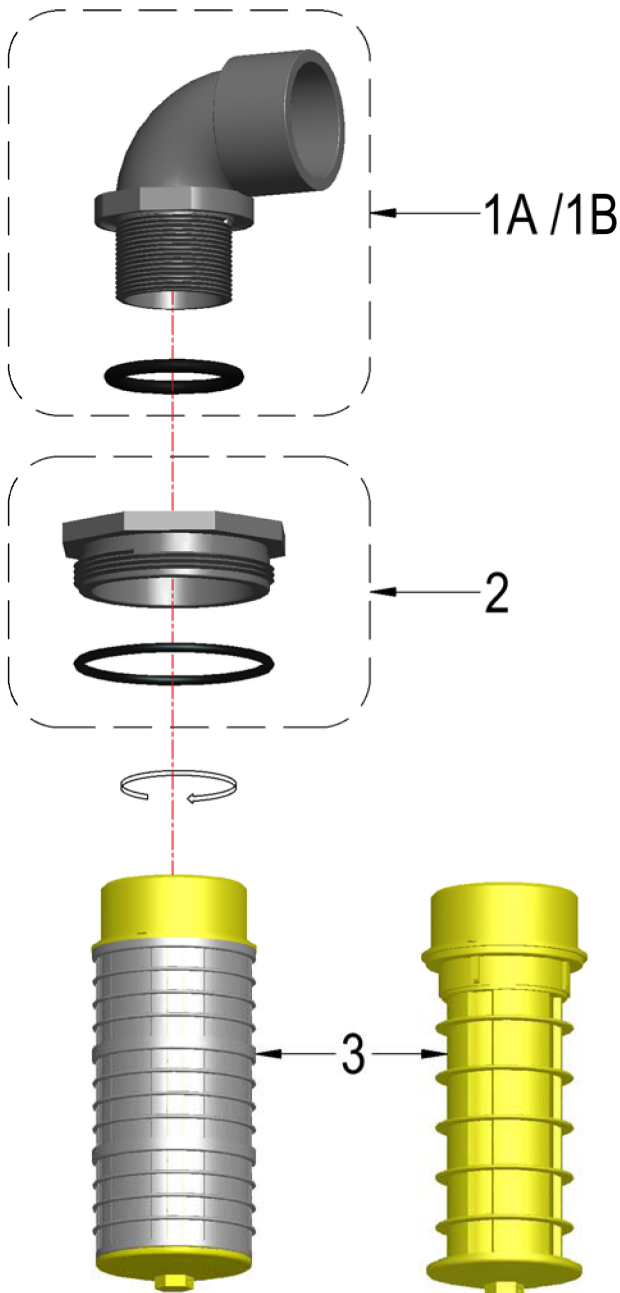




DISTRIBUTION & COLLECTION SYSTEMS

63 mm Elbow Double Strainer



BASKETS
REMOVED FOR
FILTER USE

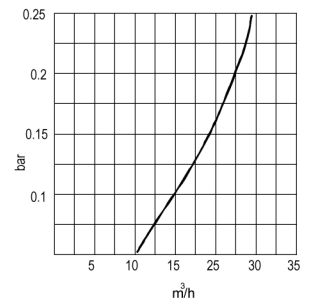
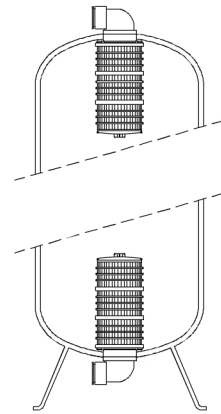
14 upto 36





4 - 8 UN THREAD

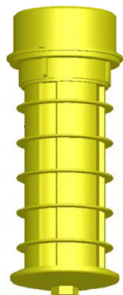
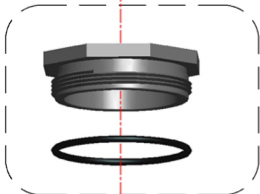
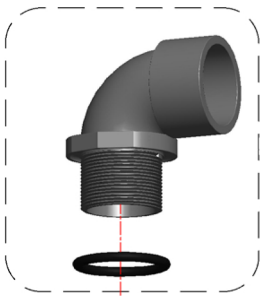


2

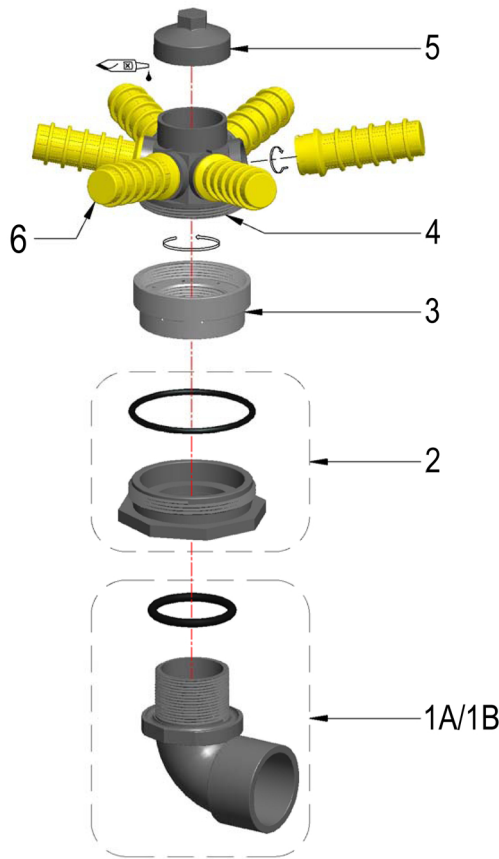


Item	Description	Dimension	Qty.	Material	Item Code	1A	1B
1A	type Elb 2 8NPSM	2 - 63mm	1	PVC+EPDM			
1B	type Elb 2 8NPSM	2 - 60.3mm	1	PVC+EPDM			
2	type adt 4 8UN	4 - 60mm	1	PVC			
3	type R2-0.2-180	180mm	1	PP			
							
						FC-4R2-63	FC-4R2-63.3

Hub and Lateral Distribution System 20m³



BASKETS
REMOVED FOR
FILTER USE



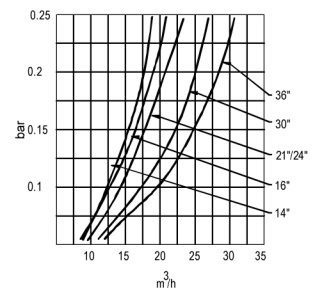
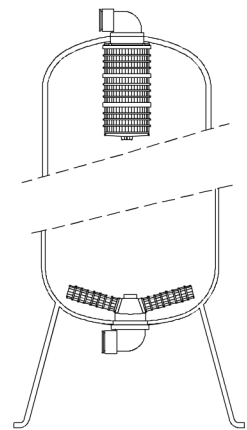
14 upto 36



4 - 8 UN THREAD



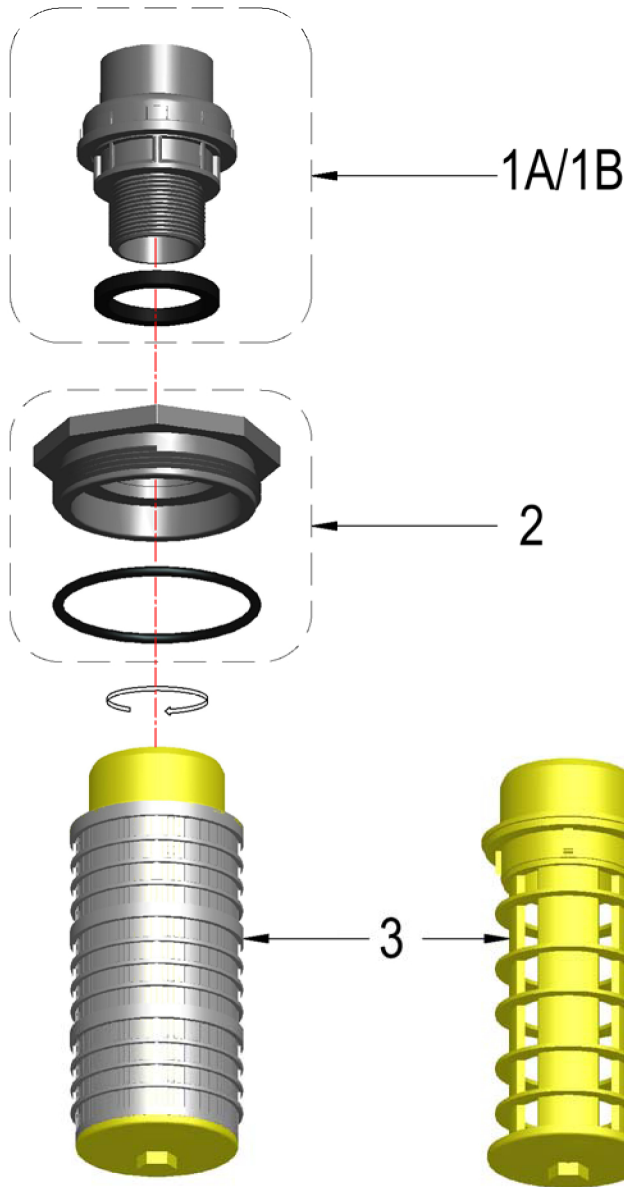
2



Item	Description	Dimension	Qty.	Material	Item Code	1A	1B
1A	type Elb 2 8NPSM	2 - 63mm	1	PVC+EPDM			
1B	type Elb 2 8NPSM	2 - 60.3mm	1	PVC+EPDM			
2	type adt 4 8UN	4 - 60mm	1	PVC+EPDM			
3	6 way hub adapter to suit elbow	2.5 - 2	1	PVC			
4	type 6 way hub	2.5	1	ABS			
5	type 6 way hub closure		1	ABS			
6	Lateral						
	Tank dia	Lateral Description	Lateral Length				
	14	type A1-0.25-85	85mm	6	PP		
	16	type A1-0.25-113	113mm	6	PP	FC-414-63	FC-414-60.3
	21	type A1-0.25-143	143mm	6	PP	FC-416-63	FC-416-60.3
	24	type A1-0.25-143	143mm	6	PP	FC-421-63	FC-421-60.3
	30	type A1-0.25-185	185mm	6	PP	FC-424-63	FC-424-60.3
	36	type A1-0.25-240	240mm	6	PP	FC-430-63	FC-430-60.3
	type R2-0.2-180		180mm	1	PP	FC-436-63	FC-436-60.3

THIS INFORMATION IS BASED ON OUR PRESENT STATE OF KNOWLEDGE AND IS INTENDED TO PROVIDE GENERAL NOTES ON OUR PRODUCTS AND THEIR USES . IT SHOULD NOT THEREFORE BE , CONSTRUDED AS A GURANTEERING SPECIFIC PROPERTIES OF THE PRODUCTS OR THEIR SUITABILITY FOR A PARTICULAR APPLICATION .

40 NB Double Strainer



BASKETS
REMOVED FOR
FILTER USE

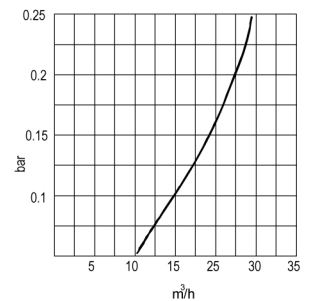
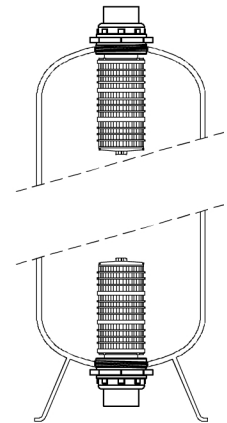
14 upto 36





4 - 8 UN THREAD

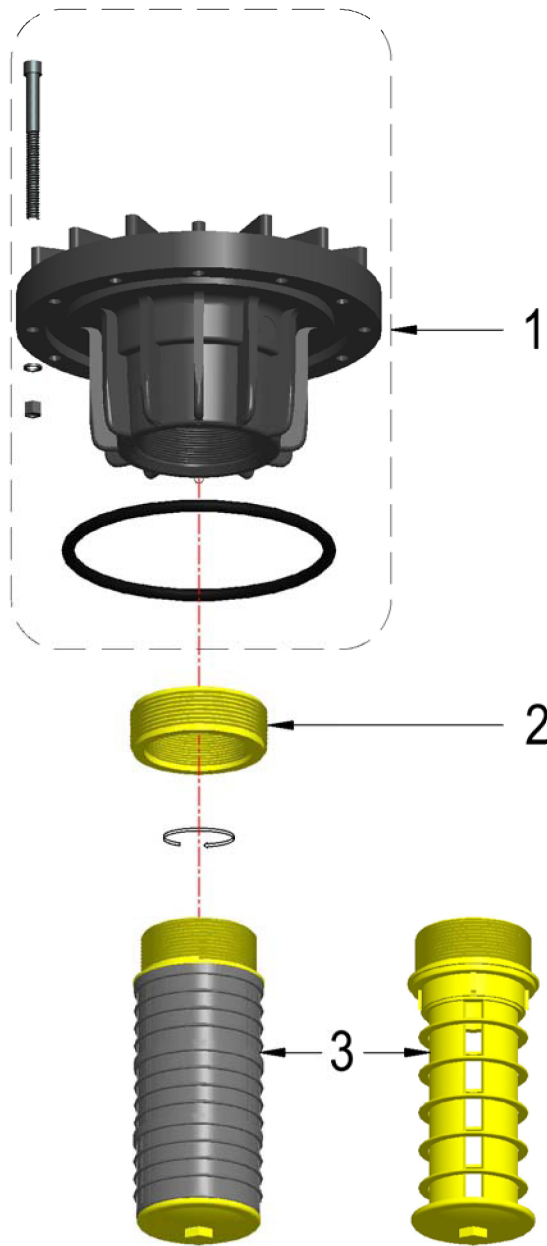


1.5



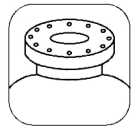
Item	Description	Dimension	Qty.	Material	Item Code	1A	1B
1A	type Union G1.5	SW Ø50mm/Ø48.3mm	1	PVC+EPDM			
1B	type Union G1.5	G1.5	1	PVC+EPDM			
2	type adt 4 8UN	4 - 50mm	1	PVC+EPDM			
3	type R2-0.2-180	180mm	1	PP			
							
						FC-4R2-50UN-S	FC-4R2-50UN-T

Flanged Double Strainer



BASKETS
REMOVED FOR
FILTER USE

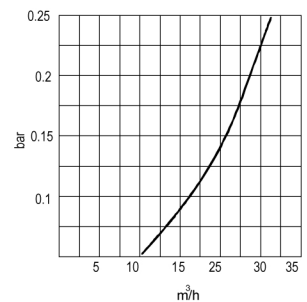
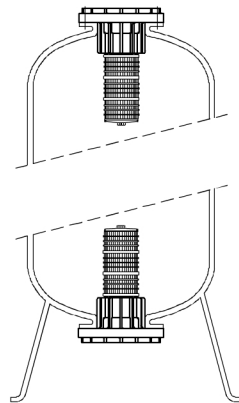
14 upto 36



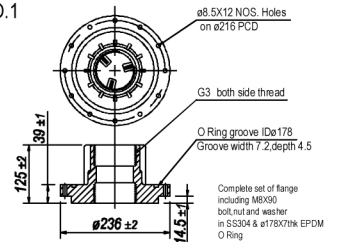
6 Flange



3



ITEM NO.1

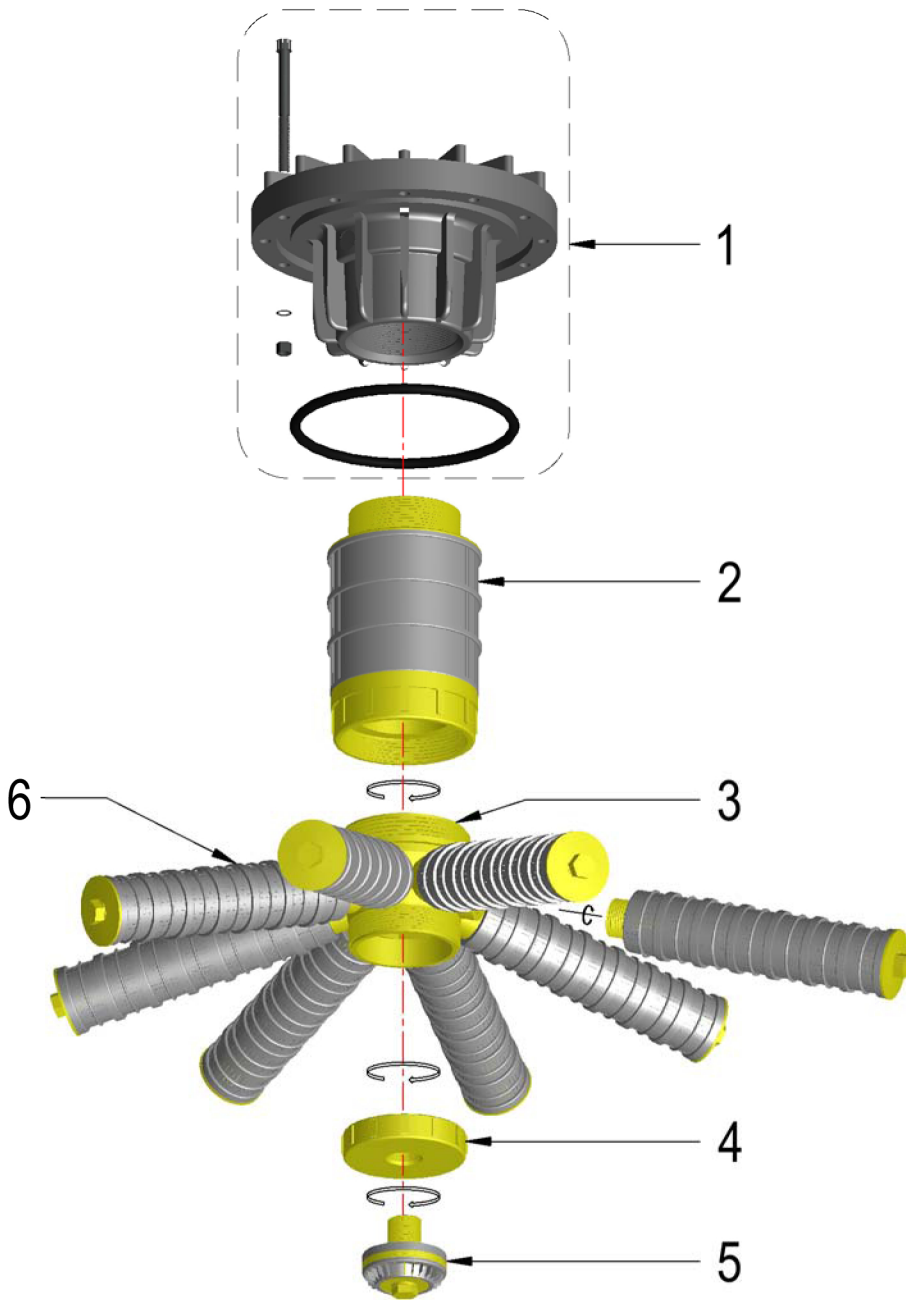


Item	Description	Dimension	Qty.	Material	Item Code
1	type ADT.6 (42 / 48 vessel)	DN 65	1	PVC+SS+EPDM	
2	connector bush	G3 -G2.5	1	PP	
3	type R2-0.2-180	180mm	1	PP	

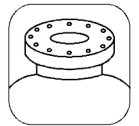


FC-6FR2A-75

6F63A Distribution System



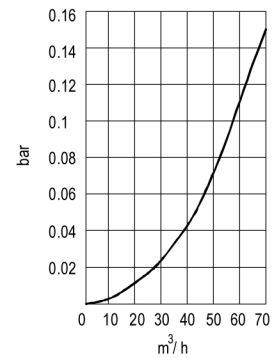
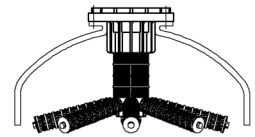
42 / 48



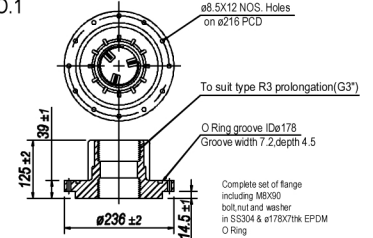
6 Flange



DN80

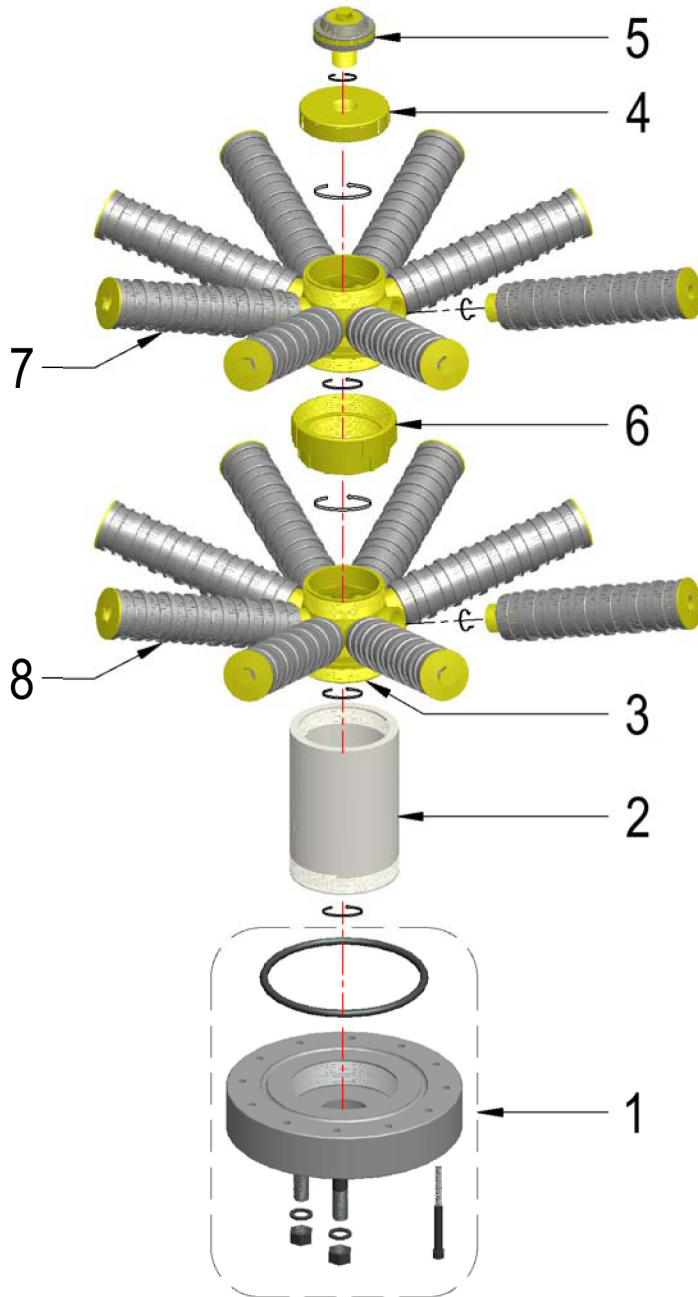


ITEM NO.1

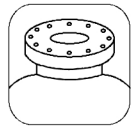


Item	Description	Dimension	Qty.	Material	Item Code	Item Code
1	type ADT.6 (42 / 48 vessel)	DN 80	1	PVC+SS+EPDM		
2	R3 Assy. for 42 / 48	G3	1	PP		
3	type 8 way hub	4 - 3	2	PP		
4	type 8 way hub closure	3	1	PP		
5	type L - 2-G3/4 -30-30	G3/4	1	PP		
6	Lateral					
	Tank dia	Lateral Description	Lateral Length			
	42	type A-0.2/0.5-M30-361	361mm	8	PP	FC-6F42A-75U
	48	type A-0.2/0.5-M30-423	423mm	8	PP	FC-6F48A-75U
						FC-6F42A-76U
						FC-6F48A-76U

6F63A Distribution System



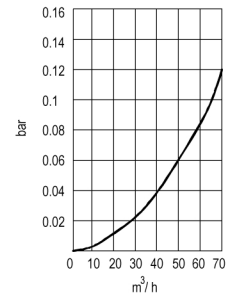
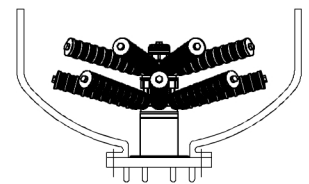
63



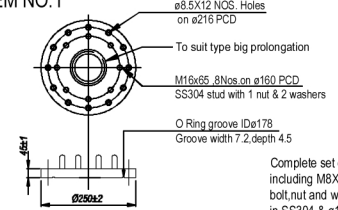
6 Flange



DN80



ITEM NO.1



Complete set of flange including M8X90 bolt, nut and washer in SS304 & ø178X7thk EPDM O Ring



Item	Description	Dimension	Qty.	Material	Item Code	Item Code
1	type ADT.6 (42 / 48 vessel)	DN 80	1	PVC+SS+EPDM		
2	Big prolongation	4 - 4.5	1	PP		
3	type 8 way hub	4 - 3	2	PP		
4	type 8 way hub closure	3	1	PP		
5	type L - 2-G3/4 -30-30	G3/4	1	PP		
6	type 8 way hub connector	3 - 4	1	PP		
7	type A-0.2/0.5-M30-423	423mm	8	PP		
8	type A-0.2/0.5-M30-547	547mm	8	PP		



FC-6F63-90L



FC-6F63-91L