

CODELINE® - 40S SERIES

4 INCH SIDE ENTRY MEMBRANE HOUSING FOR RO APPLICATIONS

MEMBRANE HOUSING DATASHEET

ARTICLE CODE: 40S30, 40S45, 40S60, 40S30 (NC), 40S45 (NC), 40S60 (NC)

GENERAL INFORMATION

Codeline 40S Series is membrane housing of 4" diameter with side entry design. This is used for commercial, municipal and industrial RO applications. Vessel models are available upto a maximum operating pressure of 300 PSI, 450 PSI & 600 PSI with multiport connectivity. These are made up of epoxy / glass composite to meet the demands of long term and continuous use in RO processes. Codeline 40S Series vessels can accommodate any standard* 4" membrane element. The 40S Series also comes with an optional sanitary connection.

* Standard element length = 40" long

UNIQUE FEATURES

- Multi-porting option for connecting vessels to each other
- Various models are available with coded and non-coded features
- Mirror Finish ID for easy & quick loading and unloading of membranes
- Quick lock head retention system for quick access to membranes
- Exteriors coated with high gloss polyurethane paint for UV resistance
- Compact design for use in various water treatment units
- All components of the shell and head are constructed from material that are NSF listed
- Head seal area is formed by mandrel surface; hence more accurate
- Head seal is formed inside the groove, hence doesn't roll during head assembly
- Single piece head assembly reduces number of spares (available as non-coded option for all pressure ratings).

CERTIFICATIONS

- Codeline 40S non-coded: CE & NSF certified
- Codeline 40S coded: ASME code compliant, CE certified NSF certified

CODELINE 40S SERIES SPECIFICATION*

Code Compliant

MODEL NUMBER	DRAWING NUMBER	MAX. OPERATING PRESSURE	MAX. OPERATING TEMPERATURE	QUALIFICATION PRESSURE	ELEMENT LENGTH
CODELINE 40S30	99311	300 PSI / 20 Bar	120 °F / 49 °C	1800 PSI / 124 Bar	1-6
CODELINE 40S45	99315	450 PSI / 31 Bar	120 °F / 49 °C	2700 PSI / 186 Bar	1-6
CODELINE 40S60	99313	600 PSI / 41 Bar	120 °F / 49 °C	3600 PSI / 248 Bar	1-6

Non-coded**

MODEL NUMBER	DRAWING NUMBER	MAX. OPERATING PRESSURE	MAX. OPERATING TEMPERATURE	QUALIFICATION PRESSURE	ELEMENT LENGTH
CODELINE 40S30 NC	99312	300 PSI / 20 Bar	120 °F / 49 °C	1800 PSI / 124 Bar	1-6
CODELINE 40S45 NC	99316	450 PSI / 31 Bar	120 °F / 49 °C	2700 PSI / 186 Bar	1-6
CODELINE 40S60 NC	99314	600 PSI / 41 Bar	120 °F / 49 °C	3600 PSI / 248 Bar	1-6

* Specifications are subjected to change without prior notice (for more details refer to model specific engineering drawings)

** 40S non-coded models cannot be code stamped

Available with:

CODELINE® 40S SERIES

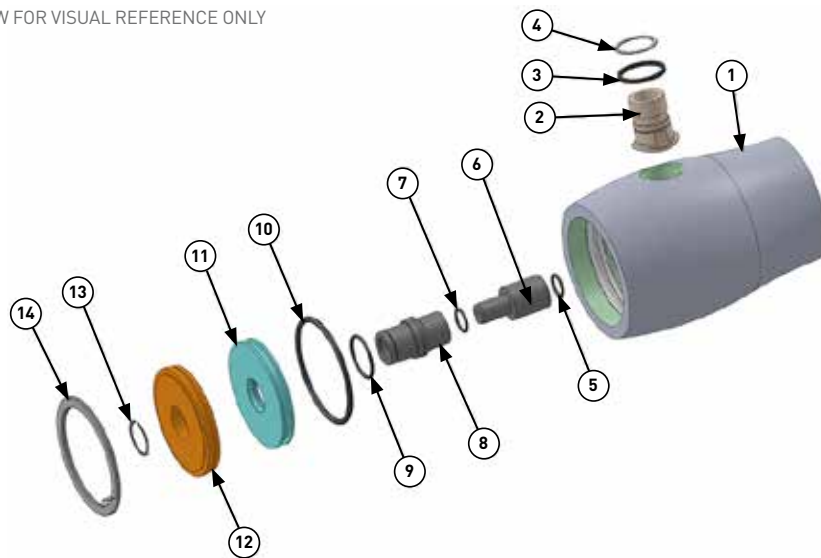
CODELINE® - 40S SERIES

4 INCH SIDE ENTRY MEMBRANE HOUSING FOR RO APPLICATIONS

MEMBRANE HOUSING DATASHEET

EXPLODED VIEW & DETAILS (CODED MODELS)

A GENERIC VIEW FOR VISUAL REFERENCE ONLY



PARTS TABLE

DRG REG	QTY	DESCRIPTION	MATERIAL	40S30	40S45	40S60
				PART NUMBER	PART NUMBER	PART NUMBER
1	1	Shell	Filament Wound Epoxy / Glass composites. Head Locking grooves integrally wound in place.	Order section	Order section	Order section
2	AR	F / C Port	CF8M / CF3M	CF8M As required	CF3M As required	CF3M As required
3	AR	F / C Port Seal	Ethylene Propylene - O Ring	As required	As required	As required
4	AR	F / C Port Retainer	300 Series Stainless Steel	As required	As required	As required
5	AR	PWT Seal	Ethylene Propylene - O Ring	As required	As required	As required
6	2	Adapter	Engineering Thermoplastic	As required	As required	As required
7	2	Adapter Seal	Ethylene Propylene - O Ring	45296	45296	45296
8	2	Permeate Port	Engineering Thermoplastic	96807	96807	96807
9	2	Permeate Port Seal	Ethylene Propylene - O Ring	45335	45335	45335
10	2	Head Seal	Ethylene Propylene - O Ring	45317	45317	45317
11	2	Sealing Plate	Engineering Thermoplastic	96855	96855	96855
12	2	Bearing Plate	316L Stainless Steel	96803	96803	96803
13	2	Perm Port Retainer	300 Series Stainless Steel	45242	45242	45242
14	2	Retainer Ring	316 Stainless Steel	45260	45260	45260
15*	AR	Saddle	Engineering Thermoplastic	45058	45058	45058
16*	AR	Strap Assembly	304 Stainless Steel Cushion	47459	47459	47459

* Not shown in the exploded view

Available with:

CODELINE® 40S SERIES

FILTRA CONSULTANTS AND ENGINEERS LTD.

Gala No. 2 & 3, Ground Floor, Neminath Industrial Estate No. 2, Navghar, Vasai (East), Dist.: Palghar - 401 219
Tel.: +91 8691009127/26 Email: filtraw@gmail.com Website: www.ewatertreatmentindia.com



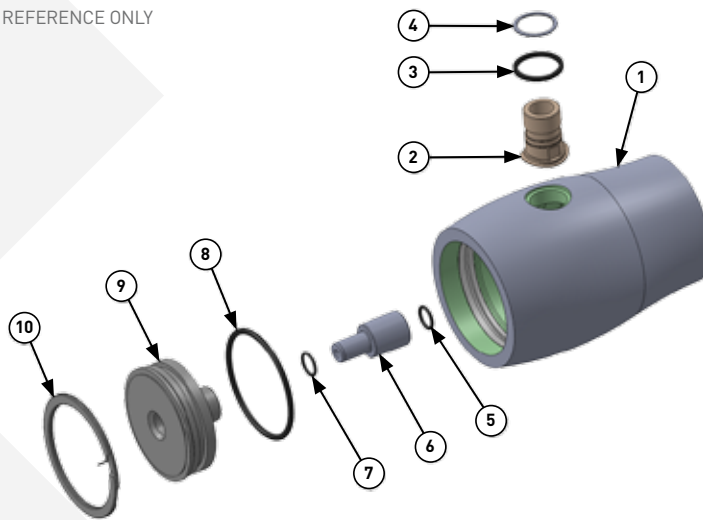
CODELINE® - 40S SERIES

4 INCH SIDE ENTRY MEMBRANE HOUSING FOR RO APPLICATIONS

MEMBRANE HOUSING DATASHEET

EXPLODED VIEW & DETAILS (NON-CODED MODELS)

A GENERIC VIEW FOR VISUAL REFERENCE ONLY



PARTS TABLE

DRG REG	QTY	DESCRIPTION	MATERIAL	40S30 NC	40S45 NC	40S60 NC
				PART NUMBER	PART NUMBER	PART NUMBER
1	1	Shell	Filament Wound Epoxy / Glass composites. Head Locking grooves integrally wound in place.	Order section	Order section	Order section
2	AR	F / C Port	CF8M / CF3M	CF8M As required	CF3M As required	CF3M As required
3	AR	F / C Port Seal	Ethylene Propylene - O Ring	As required	As required	As required
4	AR	F / C Port Retainer	300 Series Stainless Steel	As required	As required	As required
5	AR	PWT Seal	Ethylene Propylene - O Ring	As required	As required	As required
6	2	Adapter	Engineering Thermoplastic	As required	As required	As required
7	2	Adapter Seal	Ethylene Propylene - O Ring	45296	45296	45296
8	2	Head Seal	Ethylene Propylene - O Ring	45317	45317	45317
9	2	End Plug	Engineering Thermoplastic	96827	96827	96827
10	2	Retainer Ring	316 Stainless Steel	45260	45260	45260
11*	AR	Saddle	Engineering Thermoplastic	45058	45058	45058
12*	AR	Strap Assembly	304 Stainless Steel Cushion	47459	47459	47459

* Not shown in the exploded view



Note: The information and data contained in this document are based on our general experience and are believed to be correct. They are given in good faith and are intended to provide a guideline for the selection and use of our products. Since the conditions under which our products may be used are beyond our control, this information does not imply any guarantee of final product performance and we cannot accept any liability with respect to the use of our products. The quality of our products is guaranteed under our conditions of sale. Existing industrial property rights must be observed.
DS CODELINE 40S SERIES EN 3915 © 2015 Pentair. All Rights Reserved.

Available with:

FILTRA CONSULTANTS AND ENGINEERS LTD.

Gala No. 2 & 3, Ground Floor, Neminath Industrial Estate No. 2, Navghar, Vasai (East), Dist.: Palghar - 401 219
Tel.: +91 8691009127/26 Email: filtraw@gmail.com Website: www.ewatertreatmentindia.com

