

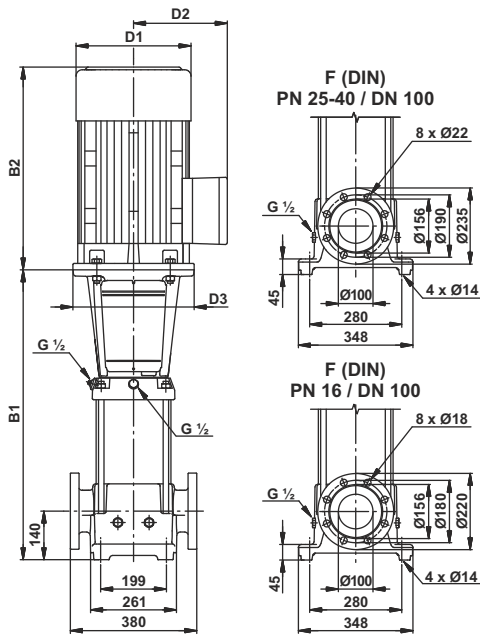
Technical Data

Vertical multistage centrifugal pumps

LCR 90

Performance Chart

Pump Type	H.P.	kW	Q l/min m ³ /h	n = 2900 rpm					
				1000.0	1250.0	1416.7	1500.0	1666.7	1833.4
				60.0	75.0	85.0	90.0	100.0	110.0
LCR 90/1-1	7.50	5.50	H mts.	20	17	15	14	11	7
LCR 90/1	10.0	7.50		25	23	22	20	18	14
LCR 90/2-2	15.0	11.0		42	37	34	31	24	17
LCR 90/2	20.0	15.0		53	48	45	43	37	32
LCR 90/3-2	25.0	18.5		68	61	55	52	44	35
LCR 90/3	30.0	22.0		80	73	68	65	59	50
LCR 90/4-2	40.0	30.0		97	88	81	77	67	55
LCR 90/4	40.0	30.0		109	99	93	89	81	69
LCR 90/5-2	50.0	37.0		125	112	104	98	87	72
LCR 90/5	50.0	37.0		137	125	116	111	100	87
LCR 90/6-2	60.0	45.0		154	140	130	123	109	92
LCR 90/6	60.0	45.0		166	152	142	136	123	108



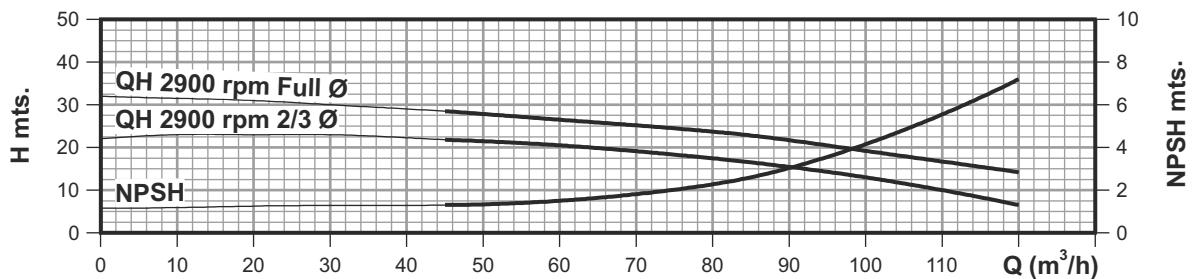
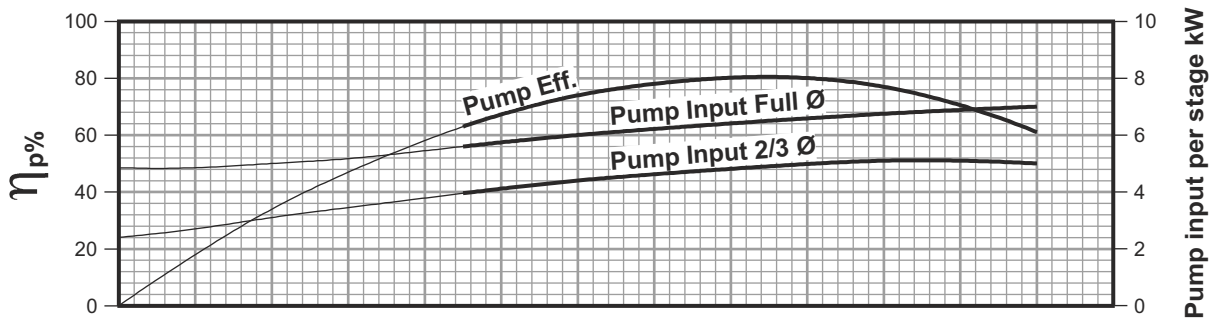
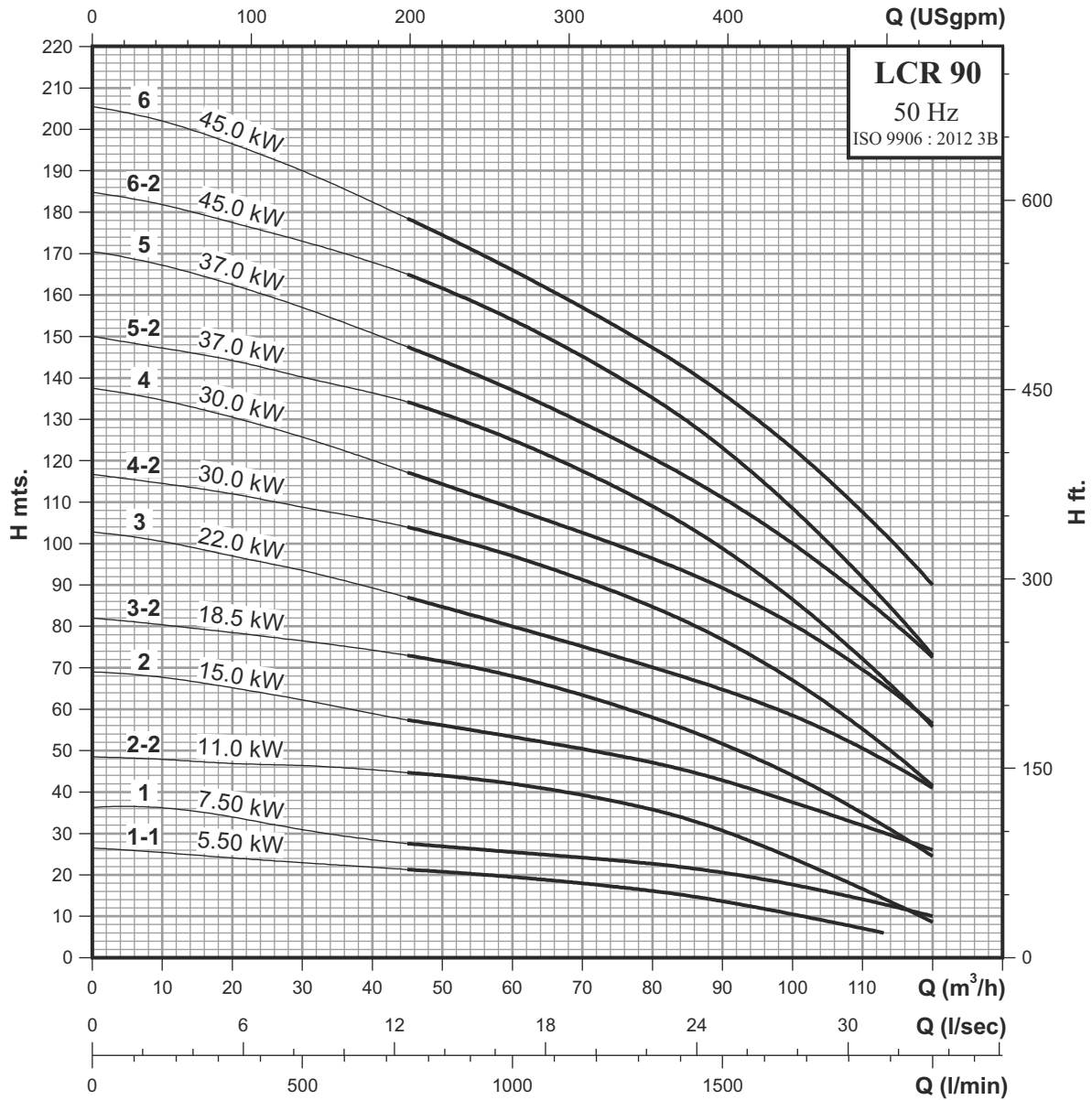
Dimensions & Weights of LCR Pump

Pump type	Dimensions [mm]					Net weight [kg]	Gross weight [kg]	Gross volume [m ³]
	DIN flange		D1	D2	D3			
	B1	B1+B2						
LCR 90/1-1	571	981	262	177	298	107.0	165.0	0.3745
LCR 90/1	571	981	262	177	298	109.0	167.0	0.3745
LCR 90/2-2	773	1315	304	225	350	150.0	208.0	0.3745
LCR 90/2	773	1315	304	225	350	164.0	222.0	0.3745
LCR 90/3-2	865	1407	304	225	350	214.0	284.0	0.4495
LCR 90/3	865	1475	363	262	350	245.0	315.0	0.4495
LCR 90/4-2	957	1603	415	300	400	326.0	396.0	0.4495
LCR 90/4	957	1603	415	300	400	326.0	396.0	0.4495
LCR 90/5-2	1049	1752	415	300	400	366.0	449.0	0.5370
LCR 90/5	1049	1752	415	300	400	366.0	449.0	0.5370
LCR 90/6-2	1141	1850	442	325	450	437.0	520.0	0.5370
LCR 90/6	1141	1850	442	325	450	437.0	520.0	0.5370

Performance Curves

Vertical multistage centrifugal pumps

LCR 90



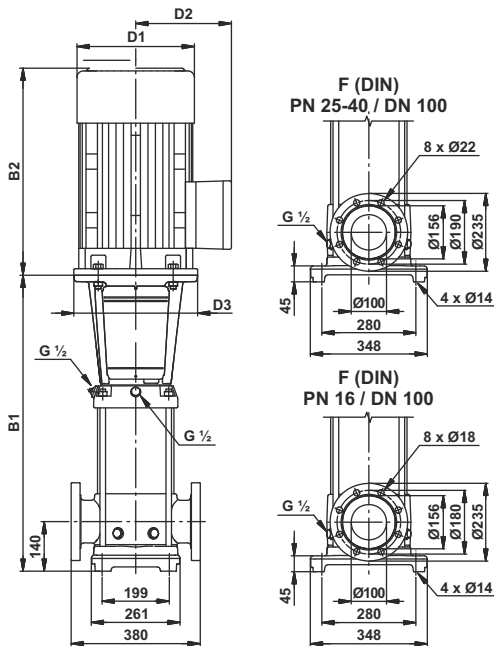
Technical Data

Vertical multistage centrifugal pumps

LCRI, LCRN 90

Performance Chart

Pump Type	H.P.	kW	Q l/min m ³ /h	n = 2900 rpm					
				1000.0	1250.0	1416.7	1500.0	1666.7	1833.4
				60.0	75.0	85.0	90.0	100.0	110.0
LCRI, LCRN 90/1-1	7.50	5.50	H mts.	20	17	15	14	11	7
LCRI, LCRN 90/1	10.0	7.50		25	23	22	20	18	14
LCRI, LCRN 90/2-2	15.0	11.0		42	37	34	31	24	17
LCRI, LCRN 90/2	20.0	15.0		53	48	45	43	37	32
LCRI, LCRN 90/3-2	25.0	18.5		68	61	55	52	44	35
LCRI, LCRN 90/3	30.0	22.0		80	73	68	65	59	50
LCRI, LCRN 90/4-2	40.0	30.0		97	88	81	77	67	55
LCRI, LCRN 90/4	40.0	30.0		109	99	93	89	81	69
LCRI, LCRN 90/5-2	50.0	37.0		125	112	104	98	87	72
LCRI, LCRN 90/5	50.0	37.0		137	125	116	111	100	87
LCRI, LCRN 90/6-2	60.0	45.0		154	140	130	123	109	92
LCRI, LCRN 90/6	60.0	45.0		166	152	142	136	123	108



Dimensions & Weights of LCRI, LCRN Pump

Pump type	Dimensions [mm]					Net weight [kg]	Gross weight [kg]	Gross volume [m ³]
	DIN flange		D1	D2	D3			
	B1	B1+B2						
LCRI, LCRN 90/1-1	571	981	262	177	298	107.0	165.0	0.3745
LCRI, LCRN 90/1	571	981	262	177	298	109.0	167.0	0.3745
LCRI, LCRN 90/2-2	773	1315	304	225	350	150.0	208.0	0.3745
LCRI, LCRN 90/2	773	1315	304	225	350	164.0	222.0	0.3745
LCRI, LCRN 90/3-2	865	1407	304	225	350	214.0	284.0	0.4495
LCRI, LCRN 90/3	865	1475	363	262	350	245.0	315.0	0.4495
LCRI, LCRN 90/4-2	957	1603	415	300	400	326.0	396.0	0.4495
LCRI, LCRN 90/4	957	1603	415	300	400	326.0	396.0	0.4495
LCRI, LCRN 90/5-2	1049	1752	415	300	400	366.0	449.0	0.5370
LCRI, LCRN 90/5	1049	1752	415	300	400	366.0	449.0	0.5370
LCRI, LCRN 90/6-2	1141	1850	442	325	450	437.0	520.0	0.5370
LCRI, LCRN 90/6	1141	1850	442	325	450	437.0	520.0	0.5370

Performance Curves

Vertical multistage centrifugal pumps

LCRI, LCRN 90

