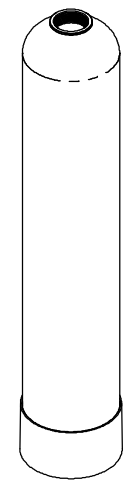
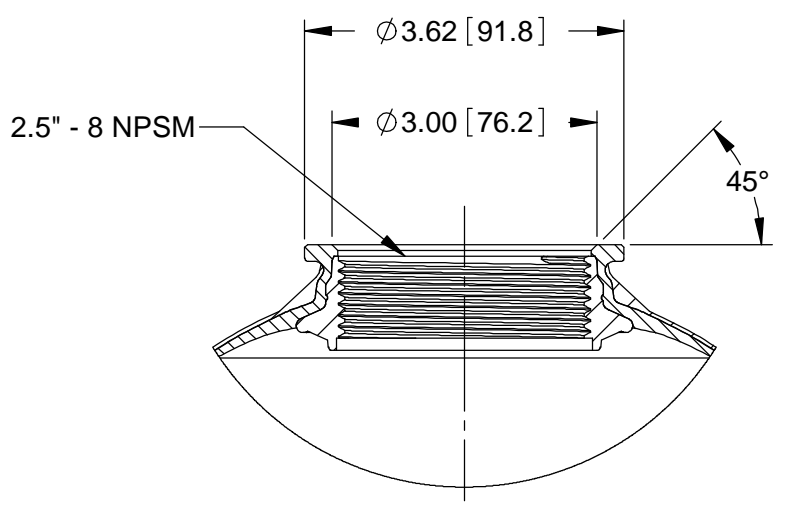
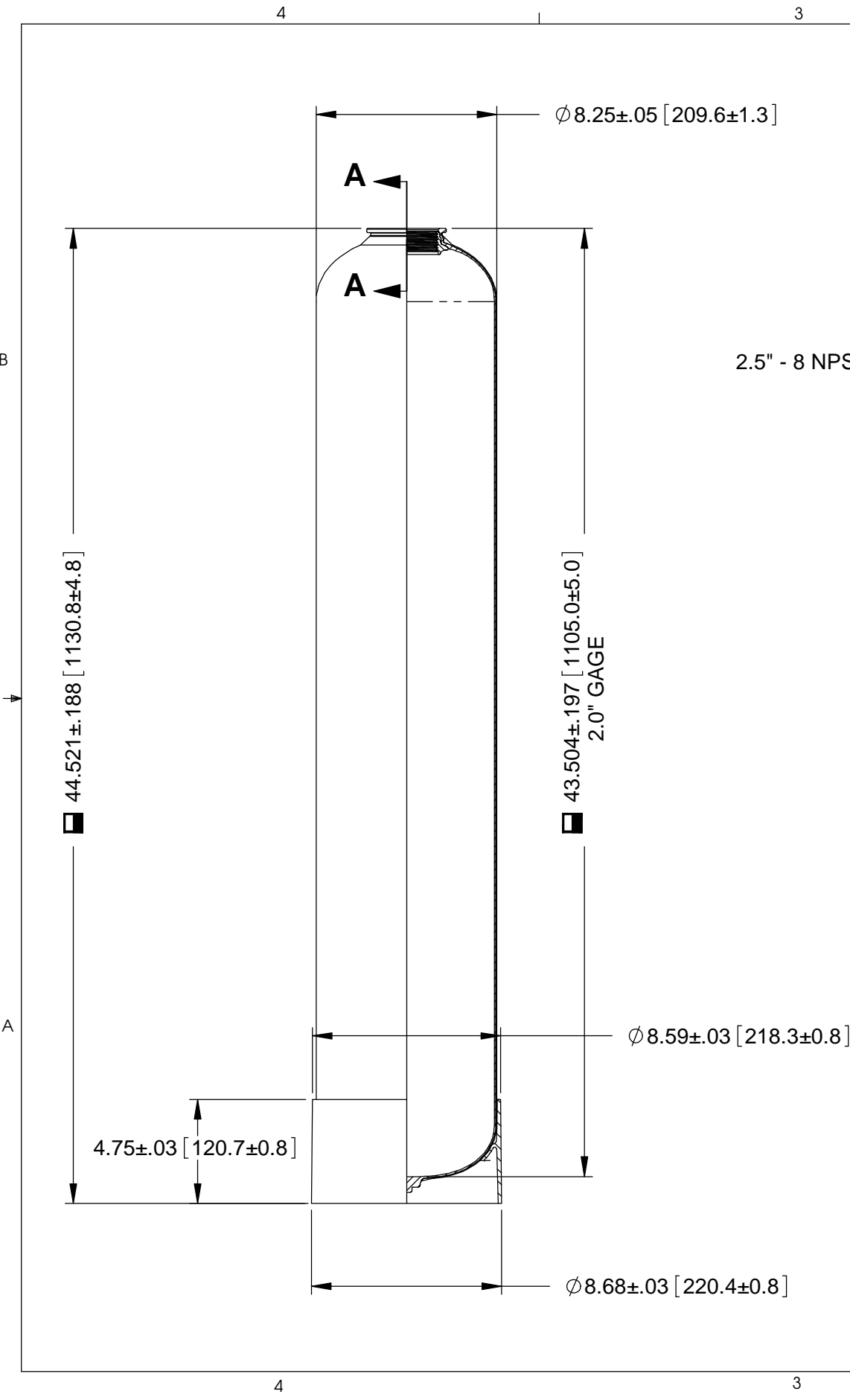


REVISIONS					
ZONE	ECN	REV.	DESCRIPTION	DATE	APP'D
		B	UPDATE FOR UNIVERSAL LENGTH PROJECT	6/14/10	ILD



MAX OPERATING PRESSURE	150 psig	[1034 kPa]
MAX OPERATING TEMPERATURE	120 °F	[49 °C]
TANK VOLUME	8.7 gal	[32.9 L]
DOMES VOLUME	.65 gal	[2.5 L]
TANK WEIGHT WITH BASE	8.6 lb	[4.81 kg]

1. NOT SUITABLE FOR PNEUMATIC PRESSURE APPLICATIONS.
2. TANK ELONGATES UP TO .25 [6.4] AT MAXIMUM OPERATING PRESSURE. FLEXIBLE CONNECTIONS ARE RECOMMENDED TO PREVENT DAMAGE TO THE TANK OR PIPING.
3. TANK IS RATED FOR AN INTERNAL NEGATIVE PRESSURE OF 5.0 [127] OF Hg VACUUM. HIGHER VACUUM VALUES MUST BE PREVENTED WITH AN ADEQUATE VACUUM BREAKER
4. MINIMUM CLEARANCE OF 48.0 [1219.2] ON TOP REQUIRED FOR PIPING AND MANEUVERING.
5. ALL DIMENSIONS ARE APPROXIMATE.

LAST SAVED IN SMARTTEAM:6/14/2010 3:23:17 PM

CRITICALITY SYMBOLS PER QPSP-001.2  
 LEVEL I    LEVEL II    LEVEL III

THIS DOCUMENT IS SOLELY THE PROPERTY OF PENTAIR WATER TREATMENT. REPRODUCTION, USE DISCLOSURE, OR TRANSMISSION OF THIS DOCUMENT OR DETAILS CONTAINED HEREIN, IN PART OR IN WHOLE, IS PROHIBITED WITHOUT THE WRITTEN CONSENT OF PENTAIR WATER TREATMENT ENGINEERING. THIS DOCUMENT AND ANY COPIES SHALL BE RETURNED TO PENTAIR WATER TREATMENT UPON WRITTEN REQUEST.

DO NOT SCALE DRAWING. DIMS. ARE IN INCHES [mm]  
 INTERPRET DIMS AND TOLERANCES PER ASME Y14.5M -1994  
 UNLESS OTHERWISE SPECIFIED:  
 CORNER FILLETS R.005-.020 [.127-.508]  
 TOLERANCES:  
 ANGLES: ± 1°  
 1 PLACE .X: ± .015 [0.38]  
 2 PLACE .XX: ± .01 [0.3]  
 3 PLACE .XXX: ± .005 [0.13]

THIRD ANGLE PROJECTION						Pentair Water Chardon 220 PARK DRIVE CHARDON, OH 44024 USA	
APPROVALS		DATE		TITLE			
DRAWN		ILD		5/21/08		8x44 PG TANK w/ COMP BASE 2.5" TOP INLET	
CHECKED				SIZE		DWG NO.	
APPROVED		ILD		B		CHSK-5160	
		6/14/10		SCALE		SHEET 1 OF 1	
				1:6		SOLIDWORKS FORMAT	
						REV B	