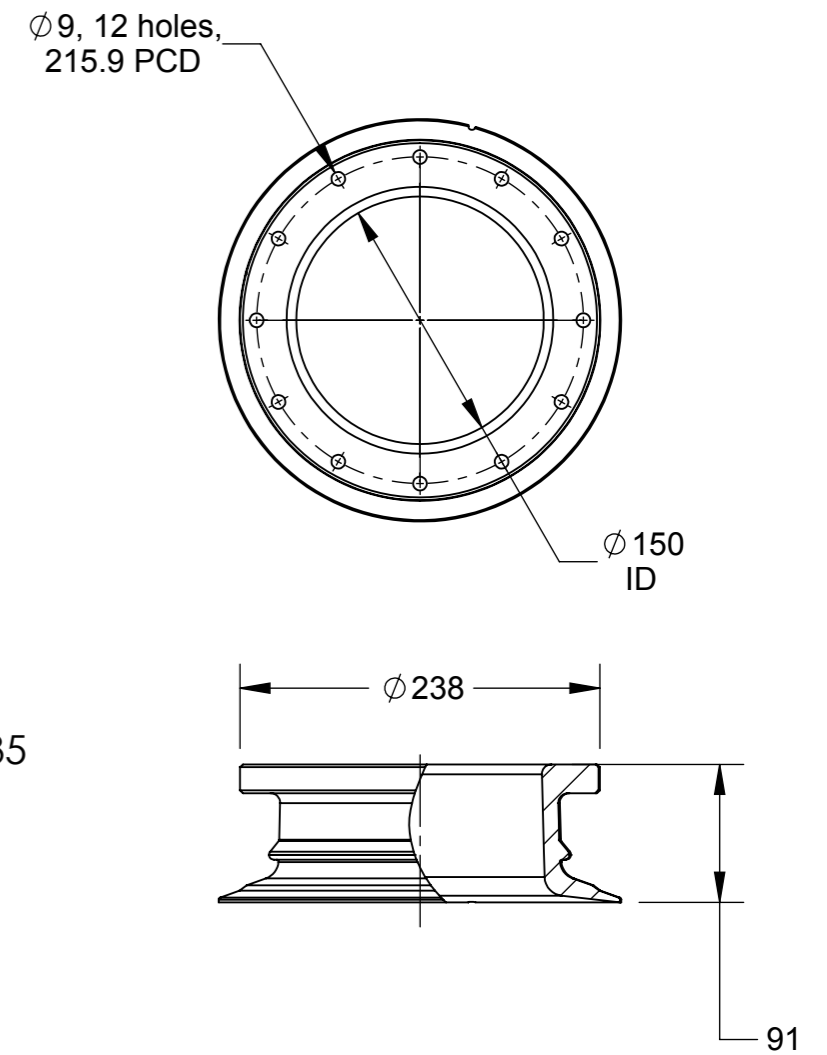


TRIPOD BASE DETAILS



6" ALUMINUM FLANGE DETAILS

MAX OPERATING PRESSURE : 10 BAR
 VOLUME OF TANK : 2271 LITRES
 OPERATING TEMPERATURE RANGE: 1°C TO 65°C
 TOTAL WEIGHT OF TANK WITH BASE : 285 KGS APPROX
 LINER MATERIAL: LLDPE
 LAMINATE MATERIAL: FRP-EPOXY BASED

NOTES:
 1. NOT TO BE USED FOR PNEUMATIC APPLICATIONS
 2. MINIMUM CLEARANCE OF 4 FEET ON TOP REQUIRED FOR PIPING AND MANOUEVERING.

THIS DOCUMENT IS SOLELY THE PROPERTY OF PENTAIR WATER. REPRODUCTION, USE, DISCLOSURE, OR TRANSMISSION OF THIS DOCUMENT OR DETAILS CONTAINED HEREIN, IN PART OR IN WHOLE, IS PROHIBITED WITHOUT THE WRITTEN CONSENT OF PENTAIR WATER. THIS DOCUMENT AND ANY COPIES SHALL BE RETURNED TO PENTAIR WATER UPON WRITTEN REQUEST. DO NOT SCALE DRAWING. DIMS. ARE IN mm.

THIRD ANGLE PROJECTION						VERNA, GOA INDIA	
APPROVALS		DATE		TITLE			
DRAWN AXA		13MAY05		63X67 10 BAR COMPOSITE TANK 6" TOP-BOTTOM OPENINGS			
CHECKED PGS		13MAY05		SIZE B/A3		DWG. NO. 88002	
APPROVED MD		13MAY05		ECN 4230		ECN DATE 14-OCT-16	
				SCALE NONE		SHEET 1 OF 1	