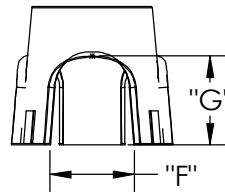
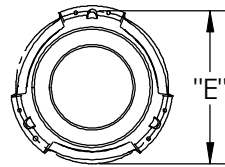
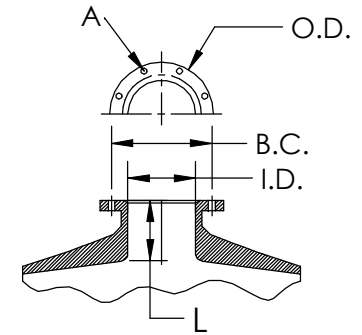


TANK-BASE ASSEMBLY



TRIPOD BASE



TOP AND BOTTOM OPENING FLANGES							
SIZE	L	I.D.	B.C.	O.D.	A (BOLT DIA)	NUMBER OF HOLES	WEIGHT (Lbs)
INCH						HOLES	(Lbs)
6	3.6	5.9	8.5	9.4	0.31	12	5.8

TECHNICAL SPECIFICATION

MODEL	OPENINGS	OPERATING PRESSURE (Bar)	VOLUME (ltrs.) +/- 5%	DIAMETER (mm) +/- 2%	HEIGHT OF CYLINDRICAL PORTION (mm) +/- 5%	TOTAL TANK HEIGHT (mm) +/- 5%	TOTAL HEIGHT OF TANK WITH BASE (mm) +/- 5%	WEIGHT OF VESSEL WITHOUT BASE (Kgs) +/- 5%	WEIGHT OF VESSEL WITH BASE (Kgs) +/- 5%	BASE DIMENSIONS				
										SIZE inch	TYPE	REF. DIM (mm)		
										"A"	"B"	"C"	"D"	"E"
2472	6" Top & Bottom	10	450	610	1320	1875	2222	50.72	56.42	24	Tripod	586	340	280
3072	6" Top & Bottom	10	710	770	1284	1946	2261	81.12	88.92	30	Tripod	741	490	310
3672	6" Top & Bottom	10	1020	927	1272	2000	2353	98.12	114.52	36	Tripod	960	650	360
4272	6" Top & Bottom	10	1360	1074	1222	1880	2292	125.95	145.72	42	Tripod	1051	750	390
4872	6" Top & Bottom	10	1840	1226	1140	2070	2470	158.62	182.72	48	Tripod	1203	835	390

- NOTES:
1. OPERATING TEMPERATURE RANGE: 1 °C TO 49 °C
 2. LINER MATERIAL: LLDPE
 3. LAMINATE MATERIAL: FRP-EPOXY BASED
 4. NOT TO BE USED FOR PNEUMATIC APPLICATIONS
 5. MINIMUM CLEARANCE OF 4 FEET ON TOP REQUIRED FOR PIPING AND MANEUVRING.

THIS DOCUMENT IS SOLELY THE PROPERTY OF PENTAIR WATER. REPRODUCTION, USE, DISCLOSURE, OR TRANSMISSION OF THIS DOCUMENT OR DETAILS CONTAINED HEREIN, IN PART OR IN WHOLE, IS PROHIBITED WITHOUT THE WRITTEN CONSENT OF PENTAIR WATER. THIS DOCUMENT AND ANY COPIES SHALL BE RETURNED TO PENTAIR WATER UPON WRITTEN REQUEST. DO NOT SCALE DRAWING. DIMS. ARE IN mm.

THIRD ANGLE PROJECTION			VERNA, GOA INDIA
APPROVALS	DATE	TITLE	
DRAWN AXA	11MAY05	6" TOP-BOTTOM OPENING COMPOSITE TANK (10 BAR)	
CHECKED PGS	13MAY05	SIZE B/A3	DWG. NO. 88001
APPROVED MD	13MAY05	ECN 2592	SCALE 1:1.5
		SHEET 1 OF 1	REV. C